



TYPICAL PRE-BUILT DESIGN

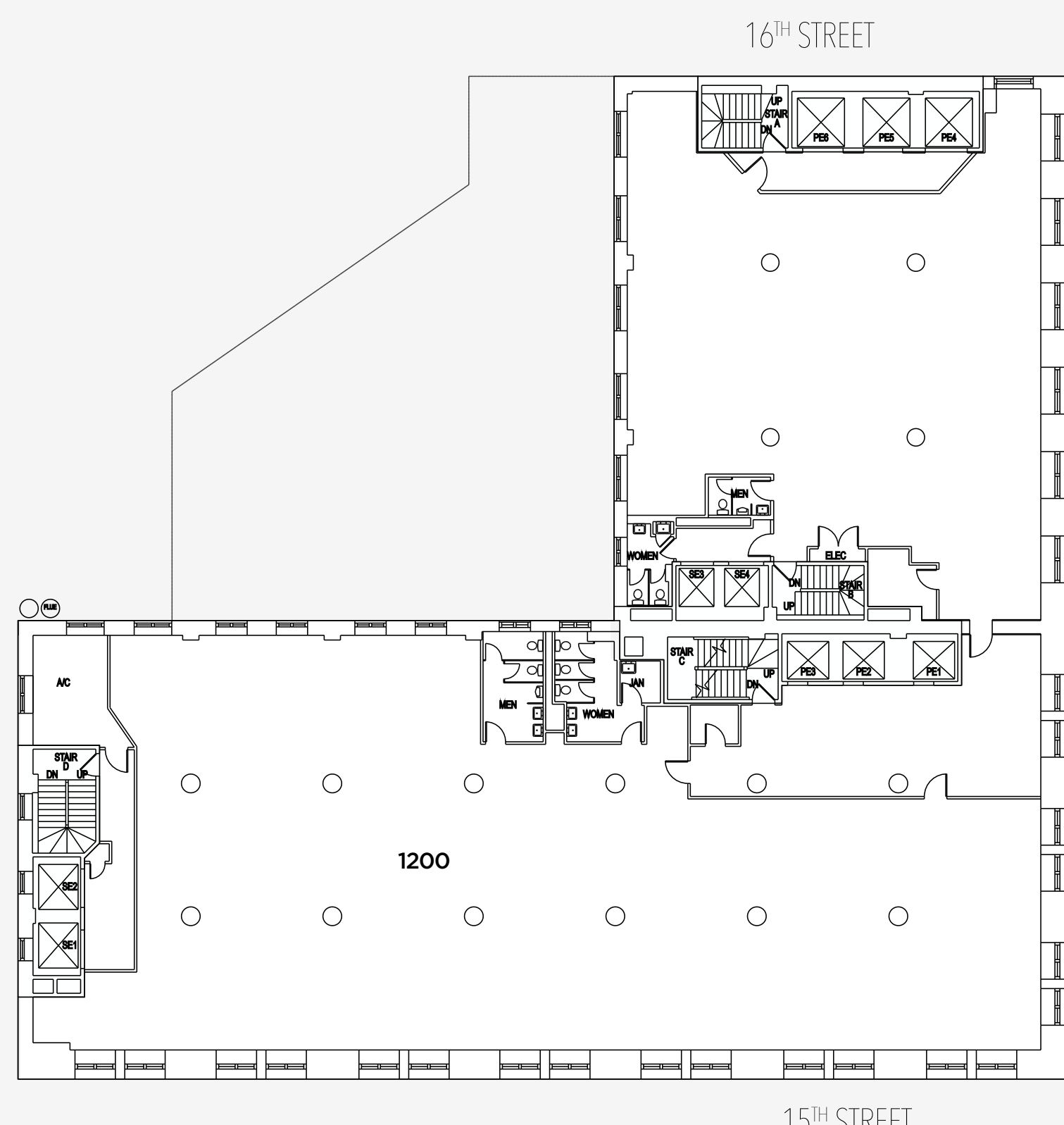


Entire 11<sup>TH</sup> Floor • 16,072 RSF  
Entire 12<sup>TH</sup> Floor • 16,072 RSF

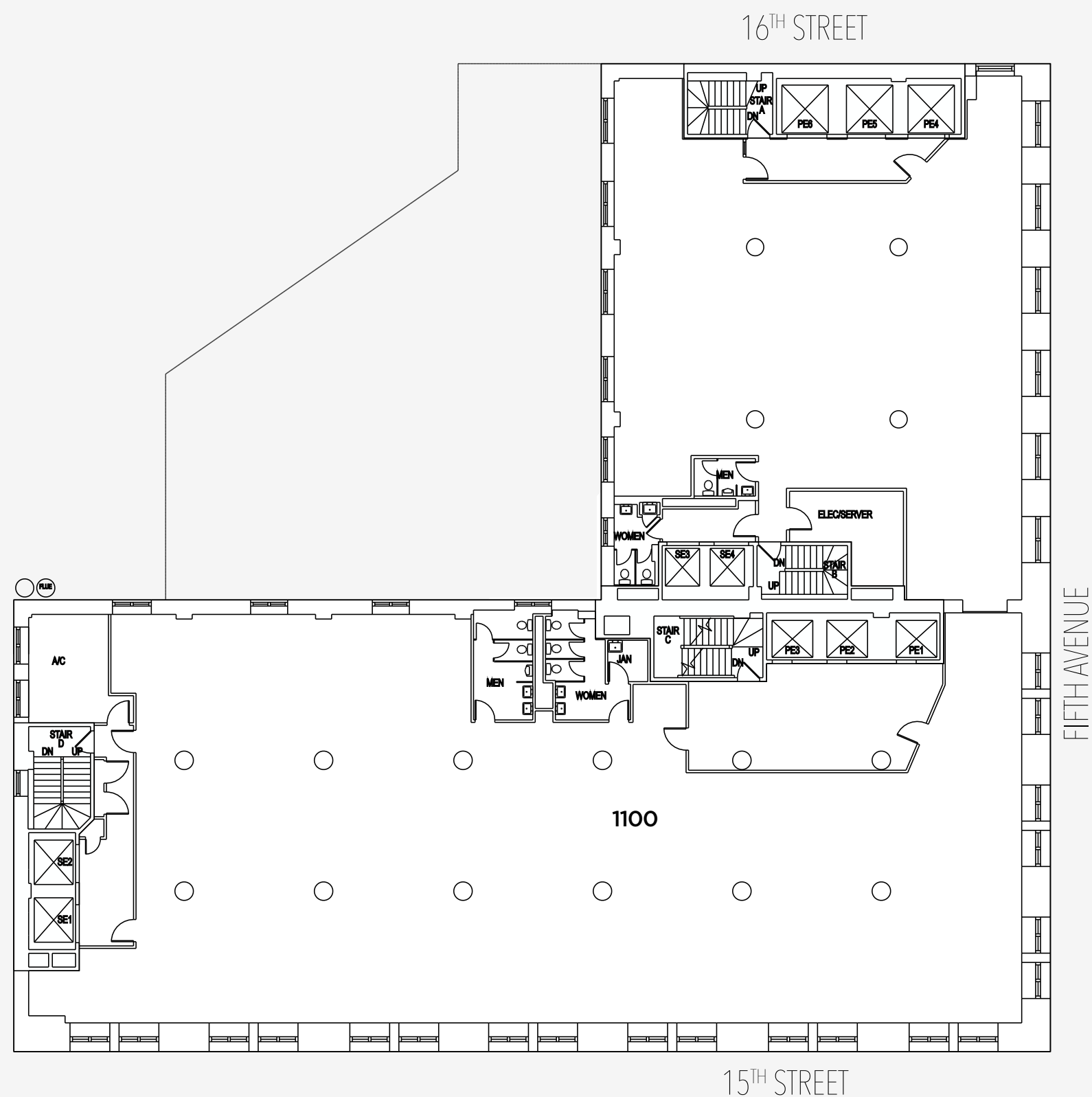
**32,144 TOTAL RSF**

LANDLORD WILL PRE-BUILD FOR CREDIT TENANT

- Floors Can Be Leased Individually • Corner Exposure • Abundant Natural Light
- Dual Entrances & Lobbies For North & South Sides Of Floor
- One Block To Union Square • Steps To Madison Square Park & More

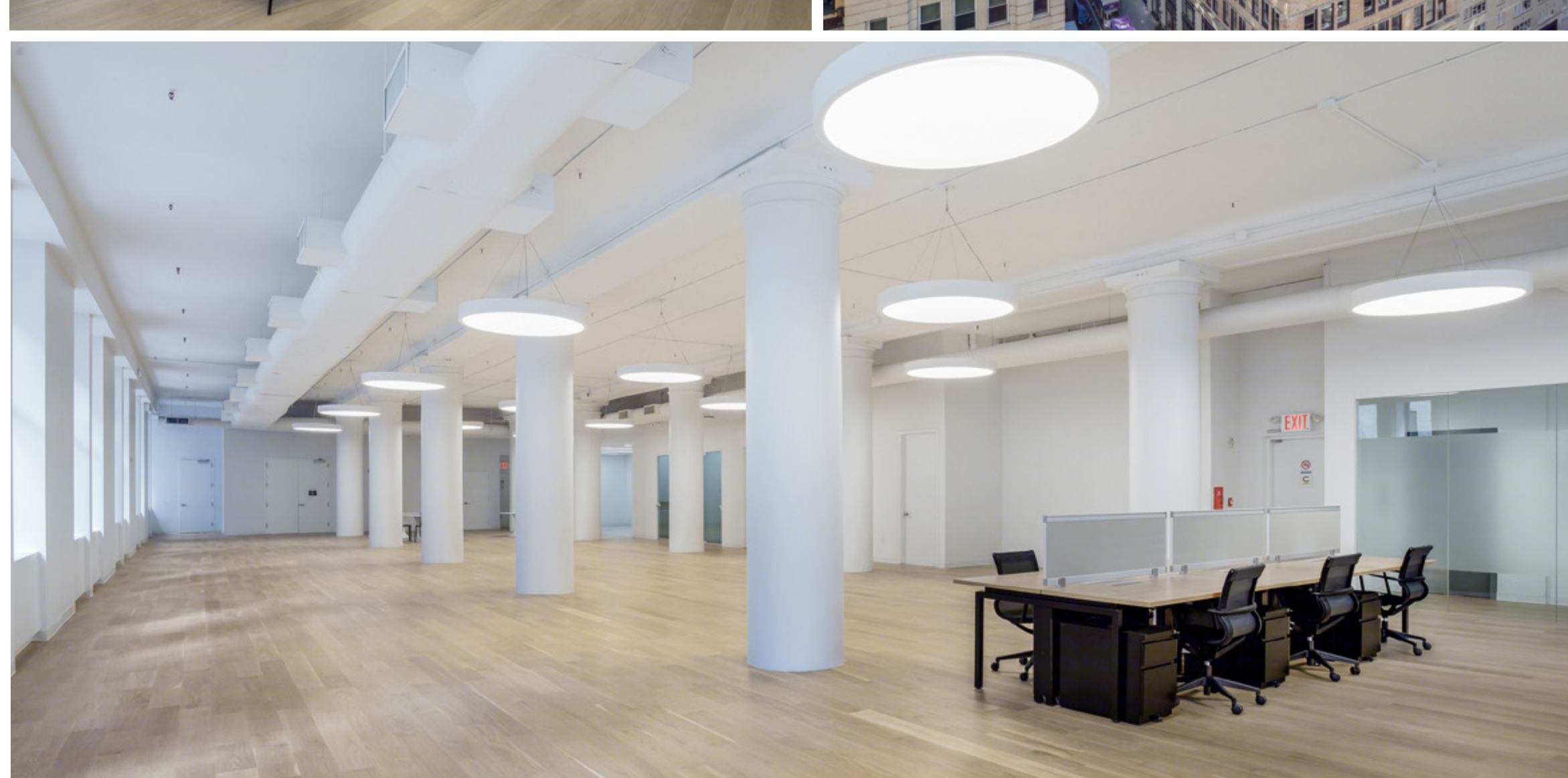
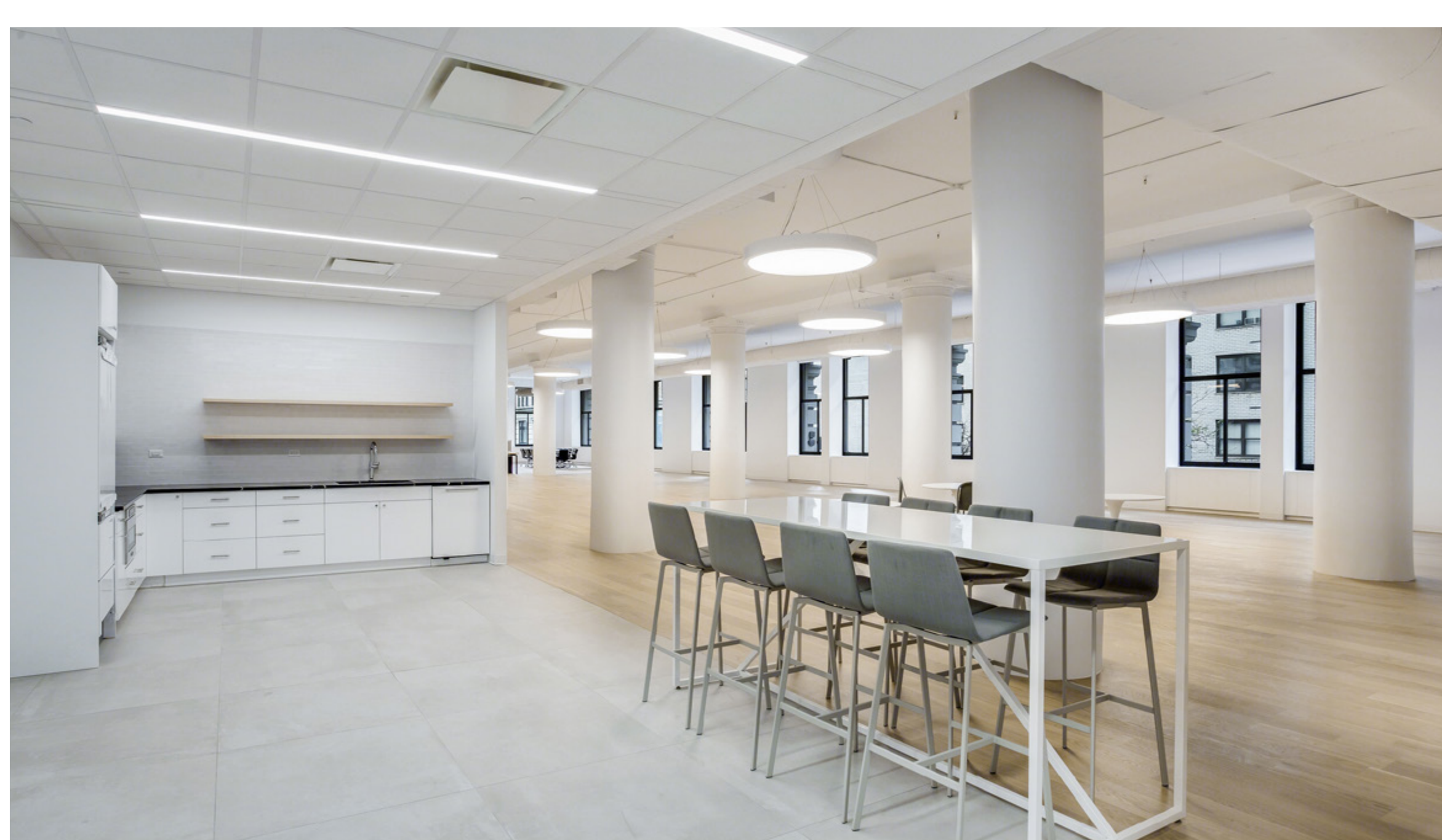


**12<sup>TH</sup> FLOOR**  
**16,072 RSF**



**11<sup>TH</sup> FLOOR**  
**16,072 RSF**

[VIEW THE FULL LISTING](#)



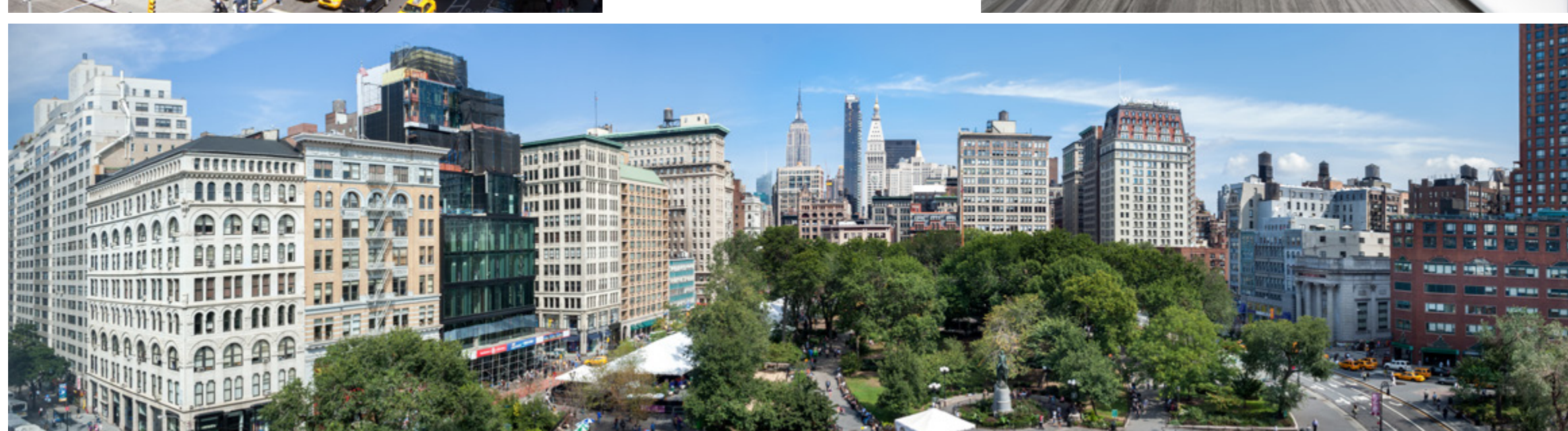
## BUILDING FEATURES

Steps To Union Square,  
Gramercy Park,  
Chelsea & Flatiron

24/7 Tenant-  
Controlled HVAC

Historic Architecture w/  
Premier Tenant Roster

24/7 Security



[100-104FIFTH.COM](http://100-104FIFTH.COM)